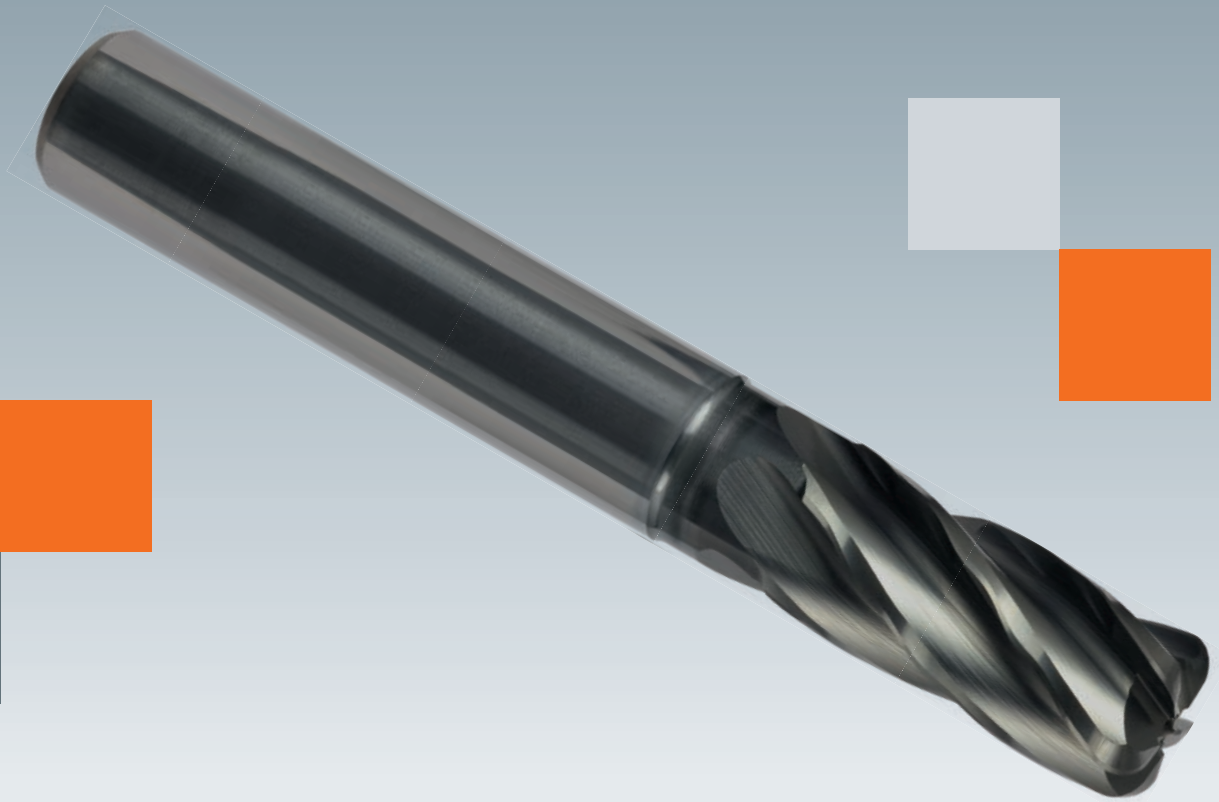




■ Made
■ in
■ Germany



N-Wave

FRANKEN
TiNox-Cut

Hartmetall-Schaftfräser mit Wellenprofil in der Spanfläche
Solid Carbide End Mills with Wave Profile on the Rake Face

- Schruppfräser mit Wellenprofil in der Spanfläche
- Erzeugt glatte Oberflächen
- Innere Kühlschmierstoff-Zufuhr, Austritt axial (ICA)
- Vibrationsmindernde Geometrie
- Roughing end mill with wave profile on the rake face
- Generates smooth surfaces
- Internal coolant supply, axial exit (ICA)
- Low-vibration geometry

N

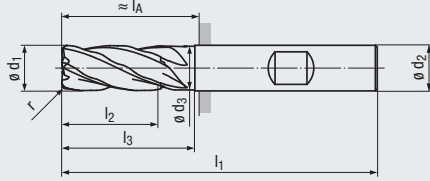
ICA

HM

DIN 6535
HA
HB

30°

ER



Inox

| | |
|---|------------------|
| Beschichtung · Coating | ALCR |
| Einsatzgebiete – Material (siehe Seite 3) | M 1.1-4.1 |
| - Volumenerspanung | S 1.1-2.6 |
| - Speziell für schwer zerspanbare Werkstoffe geeignet | |
| - Zum HPC-Schruppen geeignet | |
| - Zur effizienten Bearbeitung von Titan und Inconel | |
| Applications – material (see page 3) | |
| - High-volume machining | |
| - Especially suitable for difficult to cut materials | |
| - Suitable for HPC roughing | |
| - For efficient machining of titanium and Inconel | |

| DIN 6527 – Lange Ausführung · Long design | | | | | | | | | | Eckenradius · Corner radius | |
|--|-----|-------|-------|-------|-------------------|-------------------------|-------|---------------|--------------------------|------------------------------------|--|
| Bestell-Code · Order code | | | | | | | | | | 2561LZ | |
| $\varnothing d_1$ h10 | r | l_2 | l_3 | l_1 | $\varnothing d_3$ | $\varnothing d_2$ h6 | l_A | Z (Flutes) | Dimens.- Code | | |
| 12 | 1 | 26 | 35 | 83 | 11,5 | 12 | 38 | 5 | .012010 | ● | |
| 12 | 2 | 26 | 35 | 83 | 11,5 | 12 | 38 | 5 | .012020 | ● | |
| 12 | 2,5 | 26 | 35 | 83 | 11,5 | 12 | 38 | 5 | .012025 | ● | |
| 12 | 3 | 26 | 35 | 83 | 11,5 | 12 | 38 | 5 | .012030 | ● | |
| 12 | 4 | 26 | 35 | 83 | 11,5 | 12 | 38 | 5 | .012040 | ● | |
| 16 | 1 | 32 | 40 | 92 | 15,5 | 16 | 44 | 5 | .016010 | ● | |
| 16 | 2 | 32 | 40 | 92 | 15,5 | 16 | 44 | 5 | .016020 | ● | |
| 16 | 2,5 | 32 | 40 | 92 | 15,5 | 16 | 44 | 5 | .016025 | ● | |
| 16 | 3 | 32 | 40 | 92 | 15,5 | 16 | 44 | 5 | .016030 | ● | |
| 16 | 4 | 32 | 40 | 92 | 15,5 | 16 | 44 | 5 | .016040 | ● | |
| 20 | 2 | 38 | 50 | 104 | 19,5 | 20 | 54 | 5 | .020020 | ● | |
| 20 | 2,5 | 38 | 50 | 104 | 19,5 | 20 | 54 | 5 | .020025 | ● | |
| 20 | 3 | 38 | 50 | 104 | 19,5 | 20 | 54 | 5 | .020030 | ● | |
| 20 | 4 | 38 | 50 | 104 | 19,5 | 20 | 54 | 5 | .020040 | ● | |

● = Lagerwerkzeug, siehe Preisliste · Stock tool, see price list

Bestell-Beispiel · Ordering example: **2561LZ.012010**

ZP20125 · DEGB
 2.5T.092018 Pr · Rev.A · Printed in Germany
 10584521

EMUGE-Werk Richard Glimpel GmbH & Co. KG
Fabrik für Präzisionswerkzeuge

🏠 Nürnberger Straße 96-100
 91207 Lauf
 GERMANY

☎ +49 9123 186-0
 🖨 +49 9123 14313

FRANKEN GmbH & Co. KG
Fabrik für Präzisionswerkzeuge

🏠 Frankenstraße 7/9a
 90607 Rückersdorf
 GERMANY

☎ +49 911 9575-5
 🖨 +49 911 9575-327